

# 4 to 20mA Simple Logger® Model L320



## Specifications

### ELECTRICAL

**Number of Channels:** One

**Measurement Range:** 0 to 25mA<sub>DC</sub>

**Input Connection:** Two post screw terminal strip

**Input Impedance:** 100Ω

**Resolution:** 8 Bit (12.5μA max)

**Accuracy\*:** ±1% of Reading + Resolution

**Sample Rate:** 4096/hr maximum

**Storage Technique:**

Time Extension Recording™ (TXR™)

**Data Storage:** 8192 readings

**Power:** 9V Alkaline battery

**Battery Life:**

Up to 1 year of recording @ 25°C

**Output:** RS-232

9 pin via DB-9 connector

**Indicators:** Red LED flashes once every two seconds in STANDBY mode, twice every two seconds in LOGGING mode, and is off in OFF mode

**Controls:** One button used to start and stop recording sessions and to turn the data logger on and off

**Working Voltage:** 48V<sub>DC</sub>

### MECHANICAL

**Size:** 27/8 x 25/16 x 15/8"  
(73 x 59 x 41mm)

**Weight:** (with battery) 5 oz (140g)

**Mounting:** Base plate mounting holes or Velcro® pads supplied loose

### ENVIRONMENTAL

**Operating Temperature:**

-4 to +158°F (-20 to +70°C)

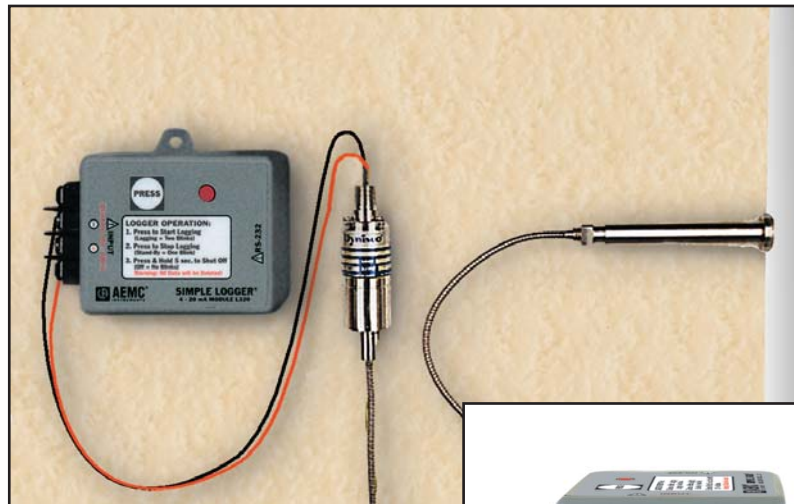
**Storage Temperature:**

-4 to +174°F (-20 to +80°C)

**Relative Humidity:**

5 to 95% non-condensing

**Safety:** EN 61010, 30V Cat. III



## Features

- Auto-Ranging
- Programmable scales via software
- Programmable units via software
- RS-232 output
- Simple one button operation
- Standard terminal strip input
- Self adjusting sample rate
- Compact size fits anywhere
- Low loop impedance
- Accuracy: ±1% of Reading + Resolution

## Applications

- Process control monitoring and troubleshooting
- Profile temperature, pressure, flow and other parameters directly
- General purpose DC current monitoring
- And many more

## ORDERING INFORMATION

## CATALOG NO.

Simple Logger® Model L320, DC Current (4 to 20mA Input) . . . . . **Cat. #2113.97**  
Includes software (CD-ROM), 6 ft DB-9 RS-232 cable, 9V Alkaline battery and user manual



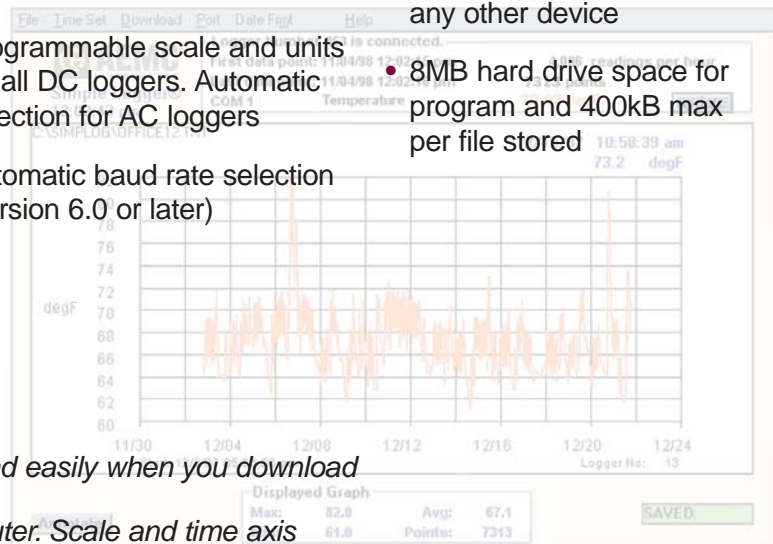
# Simple Logger® Software

## Features

- Very easy to setup and use — no programming required
- Statistics appear on screen: Max, Min, Avg, Date and Time
- On-Line display of data logger values
- Zoom capability with automatic statistics update
- User keyed text annotations
- Automatically displays values at the cursor position
- Export data to spreadsheet and database software
- Print both graphs and tabular listings
- Paste graphs into other applications
- Programmable scale and units for all DC loggers. Automatic selection for AC loggers
- Automatic baud rate selection (version 6.0 or later)

## Computer Requirements

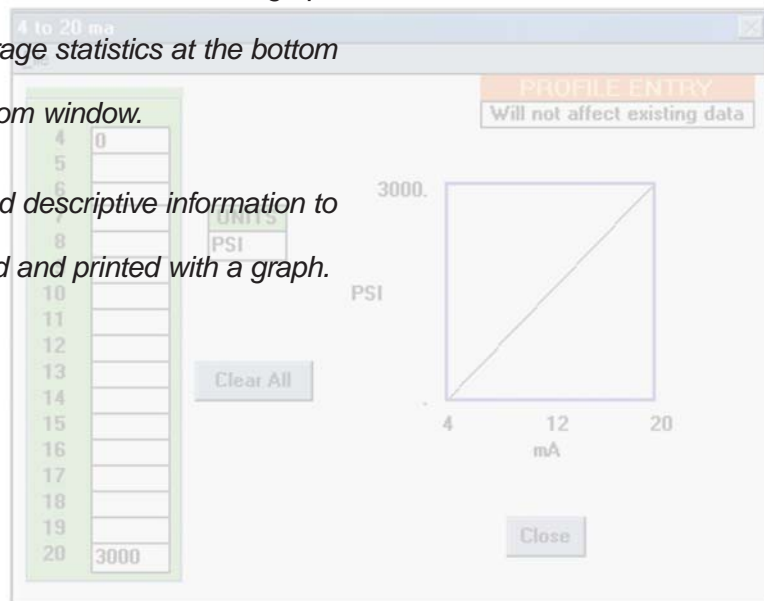
- 486 or higher
- 8MB of RAM
- Windows®95/98/2000/ME/XP or Windows®NT
- One serial port not in use by any other device
- 8MB hard drive space for program and 400kB max per file stored



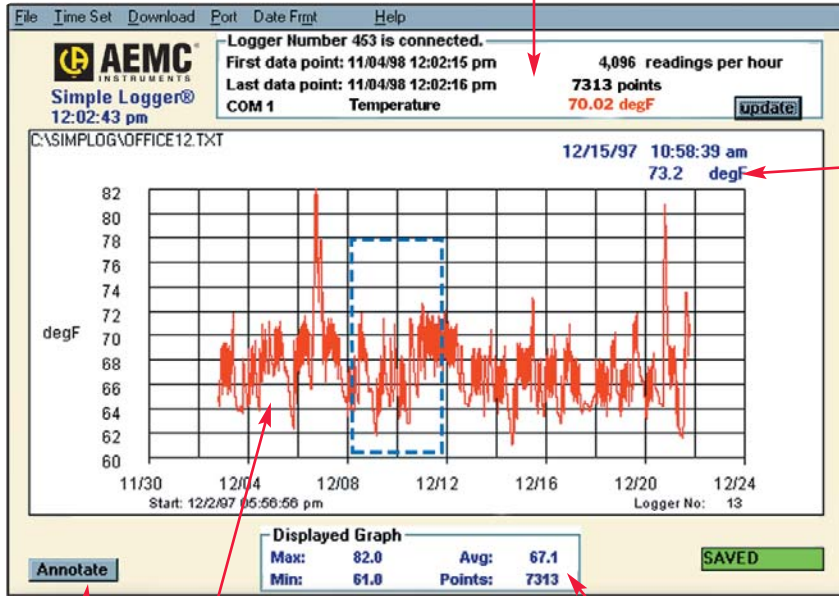
Plot graphs and view statistics quickly and easily when you download data from Simple Logger® to your computer. Scale and time axis update automatically.

Click and drag your mouse to zoom up the desired area of the graph for better viewing. The Min, Max and Average statistics at the bottom of the graph update automatically with zoom window.

Click the Annotate button to add a title and descriptive information to your graph. This information can be stored and printed with a graph.



On-line display of data

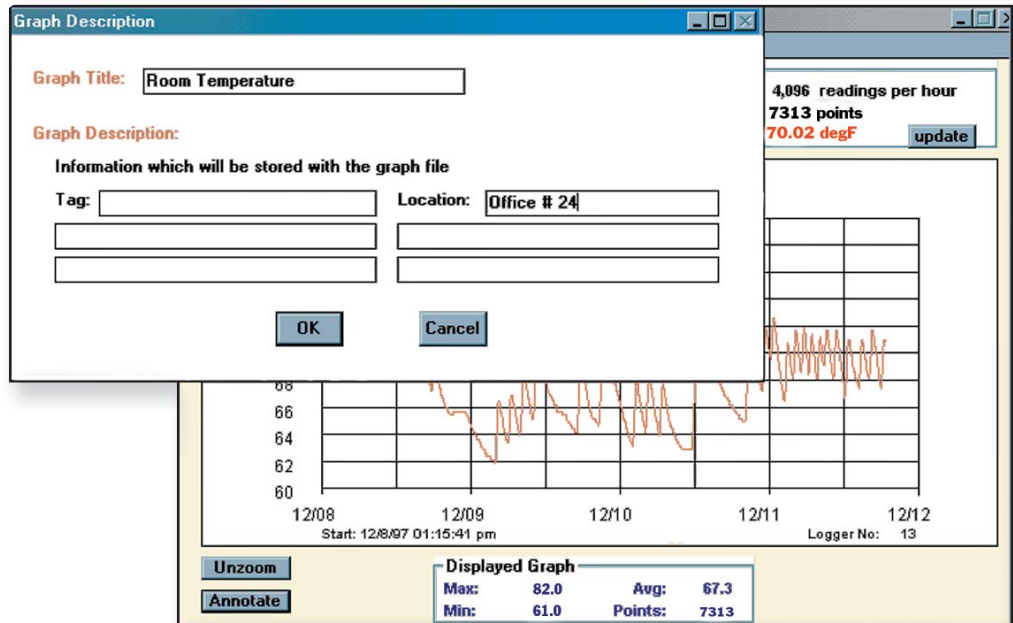


Automatic update of Y data at cursor position

Annotate button

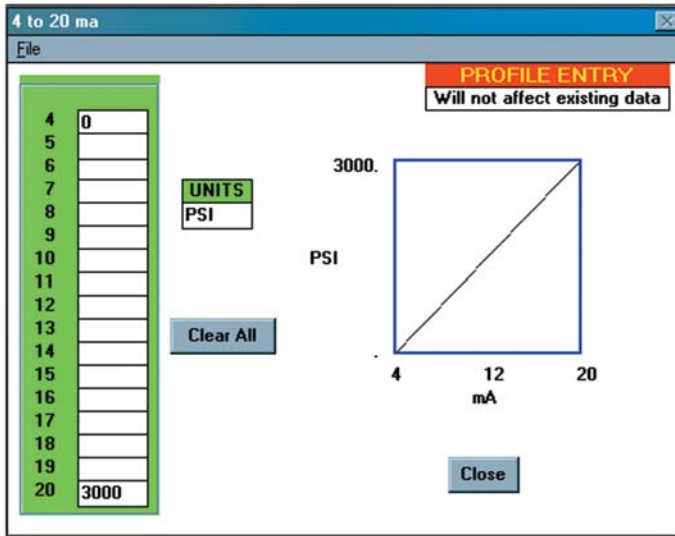
Plot area with value and time data shown on the X and Y axis

Graph Statistics

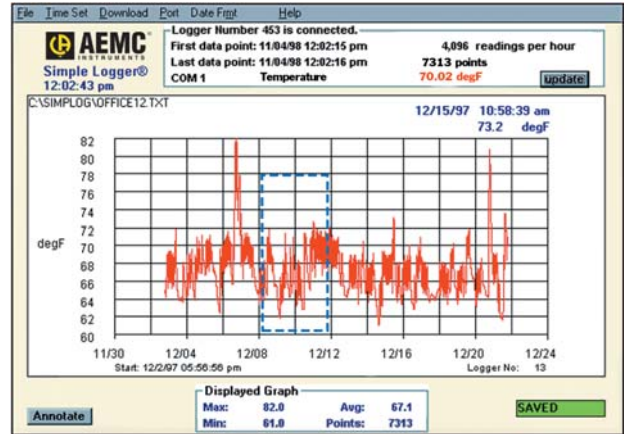


Click the Annotate button to add a title and descriptive information to your graph. This information can be stored and printed with a graph.

# Simple Logger® Software



Click the scale button in the file menu to create custom scales and engineering units for DC voltage (Models L410 & L430) and DC current loggers (Model L320).



Click and drag your mouse to zoom up the desired area of the graph for better viewing. The Min, Max and Average statistics at the bottom of the graph update automatically when the graph is zoomed.

## Contact Us

### United States & Canada:

Chauvin Arnoux<sup>®</sup>, Inc.  
d.b.a. AEMC<sup>®</sup> Instruments  
200 Foxborough Blvd.  
Foxborough, MA 02035 USA  
(508) 698-2115 • Fax (508) 698-2118  
[www.aemc.com](http://www.aemc.com)

**Customer Support – for placing an order, obtaining price & delivery:**  
[customerservice@aemc.com](mailto:customerservice@aemc.com)

**Sales Department – for general sales information:**  
[sales@aemc.com](mailto:sales@aemc.com)

**Repair and Calibration Service – for information on repair & calibration, obtaining a user manual:**  
[repair@aemc.com](mailto:repair@aemc.com)

**Technical and Product Application Support – for technical and application support:**  
[techinfo@aemc.com](mailto:techinfo@aemc.com)

**Webmaster – for information regarding [www.aemc.com](http://www.aemc.com):**  
[webmaster@aemc.com](mailto:webmaster@aemc.com)

### South America, Central America, Mexico, Caribbean, Australia & New Zealand:

Chauvin Arnoux<sup>®</sup>, Inc.  
d.b.a. AEMC<sup>®</sup> Instruments  
15 Faraday Drive  
Dover, NH 03820 USA  
(978) 526-7667 • Fax (978) 526-7605  
[export@aemc.com](mailto:export@aemc.com)  
[www.aemc.com](http://www.aemc.com)

### All other countries:

Chauvin Arnoux SCA  
190, rue Championnet  
75876 Paris Cedex 18, France  
33 1 44 85 45 28 • Fax 33 1 46 27 73 89  
[info@chauvin-arnoux.com](mailto:info@chauvin-arnoux.com)  
[www.chauvin-arnoux.com](http://www.chauvin-arnoux.com)