

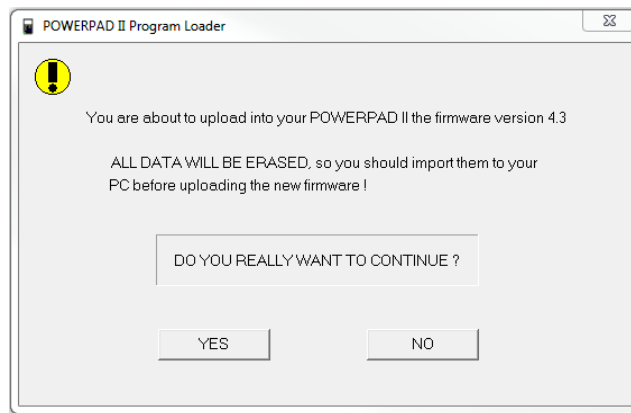
Using the Ploader Utility Program to Upgrade the AEMC[®] Model 8335 / 8435 Firmware Version 4.3

Step 1: Unzip the PowerPadIIFWV43.zip to your desktop and a folder will be created called PowerPadIIFWV43.

Step 2: Double-click to open the folder.

Step 3: Connect the PowerPad[®] Model / 8335 / 8435 to an available USB port.

Step 4: Double-click on the PloaderPowerpadII.exe file and a window will pop up.



Step 5: Select YES to continue.

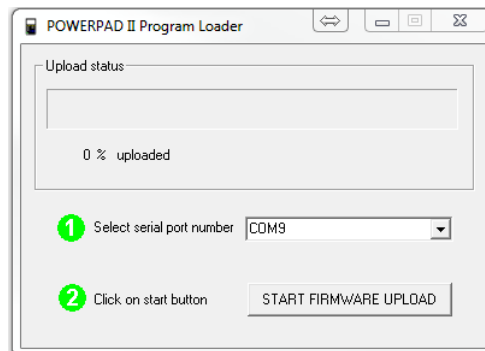
Step 6: Select or type the communications port you wish to use and press Start Firmware Upload.

To locate the instruments com port:

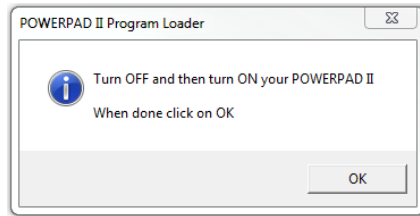
Windows 7, 8.1 and 10:

- 1: Click on "START" or press the windows key on the keyboard
- 2: Type "Devices and Printers" to open the list of attached devices
- 3: Select the 8335 / 8435 icon to open the Properties dialog window.
- 3: Select the "Hardware" tab
- 4: Note the com port number assigned to the instrument. USB Serial Port(COMx).

NOTE: The com port for the instrument will be specified after the "USB Serial Port (Com#) " where # is the com port number assigned. If the com port is not available from the drop down list then the com port # can be entered directly into the Com field as Com## (where ## is the assigned com port number for the instrument).

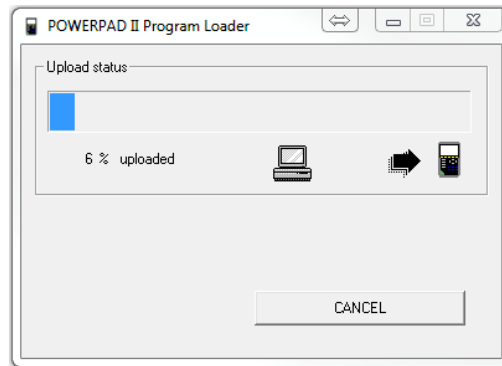


Step 7: The next window will ask to cycle the power of the PowerPad II.

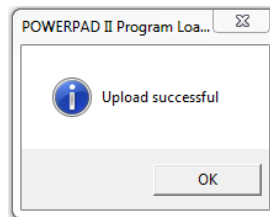


Step 8: Once the Powerpad II Model 8335 / 8435 has fully started up then select OK to continue.

Step 9: During upgrade the instruments screen should go black with a progress bar in the middle of the screen.



Step 10: The instrument will automatically turn off when the firmware is loaded and the memory is erased. The window below will appear if successful. Upgrade should only take a few minutes.



Firmware update is complete.