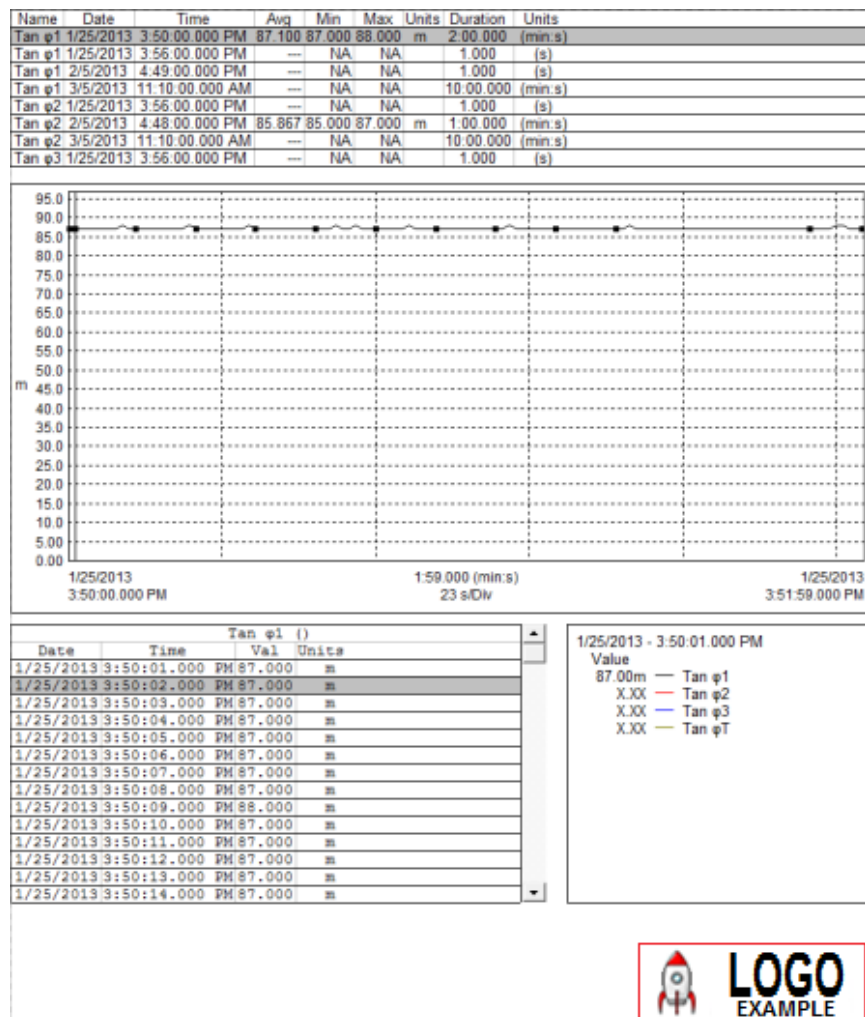


Adding OLE Objects to DataView Reports

Object Linking and Embedding (OLE) is a proprietary Microsoft technology that enables you to link to and "embed" content from one file into another. The embedded or linked content can be from a file type different from the file into which the OLE object is being placed. For example, you can embed or link a bitmap created with a graphical editing application into a text processing document. This allows you to create documents that include content you cannot otherwise create with the document's editing application.

The difference between linking and embedding is that linked objects reflect any subsequent changes made to the original, while embedded objects do not. For example, if you place a linked graph object into a text document and then change the original copy of the graph file, the changes will also be displayed within the text document. But if instead you embed a graph and later make changes to the original, the embedded object in the text document will not reflect these changes -- it will still appear as it did when you originally created the embedded object.



An example of an OLE object in a DataView report. The custom logo in the bottom right corner of the page (enclosed in a red box) is an OLE object that has been added to a standard DataView report template.



DataView supports OLE and several associated features. These features include:

- Create an OLE object and place it in the report. This can be an existing file, or one created "on the fly" specifically for this report. The object can also be a Microsoft Word document.
- Edit the content of an OLE object.
- Edit links to objects.
- Convert an object from one file type to another.
- Paste the contents of the Windows clipboard into the report as an OLE object.
- Change the icon that represents the object.


As with other content DataView report content, OLE objects are contained within frames specifically designed to create them. These frames can be moved in the same way as other DataView report frames. They cannot, however, be resized from within DataView.

Creating an OLE Object in DataView

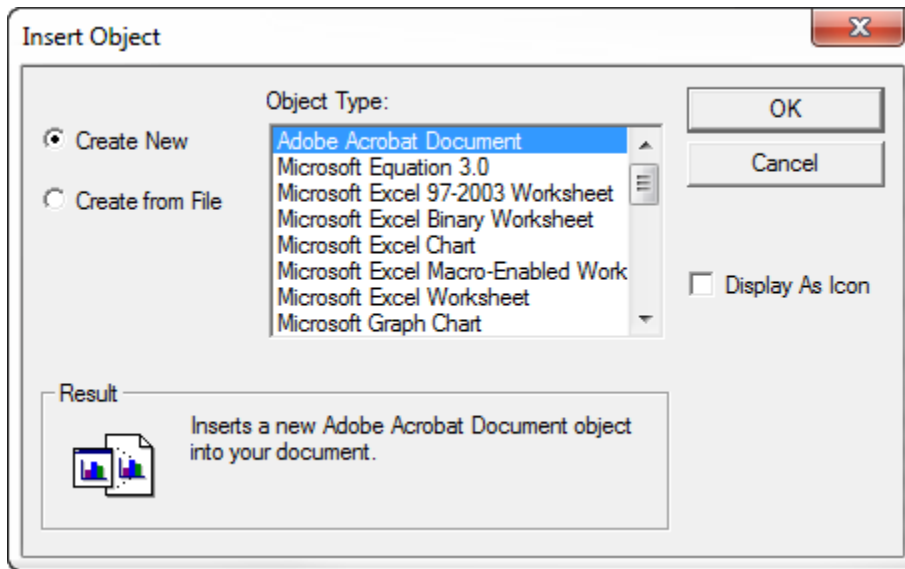
DataView provides a number of ways to create an OLE frame within a report. These include clicking the:

-  OLE toolbar icon in the toolbar. This lets you create any type of OLE object. The steps for doing this are explained below.
-  Word OLE icon. This creates a Microsoft Word-compatible OLE object. (Note that you can also create this type of object via the OLE icon; however the Word OLE icon streamlines the process.)
- Frame menu. This includes two options through which you can create OLE frames: Place OLE (for creating any type of OLE object), and Place Word OLE (specifically for creating a Microsoft Word-compatible object). Both options function similarly to creating OLE objects using the toolbar icons described above.
- Edit menu. This includes the option Paste Special, which allows you to create OLE objects from the current content in the Clipboard.

For example, to create an OLE object using the OLE icon, follow these steps:

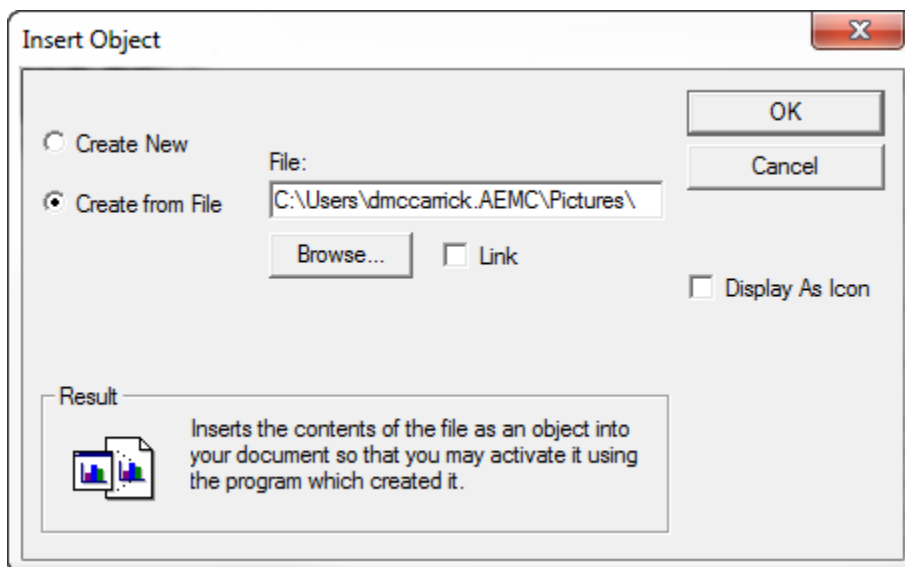
1. Left-click the mouse pointer on the OLE icon. The mouse pointer changes to the OLE cursor  while it is positioned within the margins of the page.
2. Move the cursor to the location on the page where the upper left corner of the frame is to be placed.
3. Click and hold the left mouse button, and then drag the cursor to the location on the page where the lower right corner of the frame is to be located. As you move the cursor, a dotted box is displayed. This dotted box shows the size and location of the frame being created.

4. Release the mouse button. The Insert Object dialog box will be displayed.



This dialog box includes two radio buttons. The default selection is Create New. When this button is selected, the Object Type list is displayed. From this list, you can select the type of application-specific object that is to be created "on the fly." Use the scroll bar to view additional types. When the Create New option is selected, selecting one of the Object Type options and clicking OK starts up the application appropriate for the selected object type. (The application is defined by your operating system's default editor setting for the selected file type.)

If instead you select Create from File, a dialog box appears prompting you to select an existing file in which the object is currently stored.



You can click Browse to locate the file within your computer's directories and folders. If you select the Link checkbox, the object will be linked rather than embedded. This

means that any changes made to the original linked file will also be reflected within the OLE frame inserted in the DataView report. If this option is unchecked, the OLE object will remain unchanged in the report, even if the file from which it was created is subsequently modified.

You can also choose to display the object as an icon rather than as content. Clicking the icon will display the object in a separate window. To do this, select the Display as Icon check box. When this option is selected, the Change Icon button appears. This allows you to change or modify the icon after you create it.

Note the Result field at the bottom of the dialog box. This displays a brief description of what will happen if you link or embed the selected object type.

5. After you make your selections, click OK. This creates the OLE object frame.

For More Information

The preceding procedure describes one method for inserting an OLE object to a DataView report. For complete instructions explaining other ways for adding and modifying OLE objects in DataView, see the DataView Help that comes with the software. In addition, visit the AEMC YouTube channel at <https://www.youtube.com/user/AEMCinstruments> for instructional videos about working with DataView.