

The Simple Logger<sup>®</sup> may be used with a serial to USB adaptor to improve the connection to a PC and laptop computer.

- Do not connect the USB adaptor before installing the driver.
  - Insert the CD into the PC drive and use explorer to view the driver files.
  - Click on DRIVER (D: or other CD drive) and select CH340OSER.exe.
  - The driver will automatically be installed on your computer.
1. Connect the adaptor to a USB port on your PC. An indication of the new device detection is displayed. Wait until the message “installation complete” appears, then connect the logger.



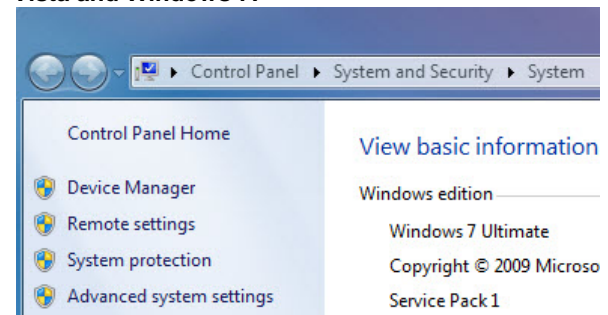
2. On your desktop, right-click on **My Computer** (XP) or **Computer** (Vista and Win7) and select **Properties**.

NOTE: In Vista and Windows 7 you can also type Device Manager in the search field of the start menu and select from the control panel list.

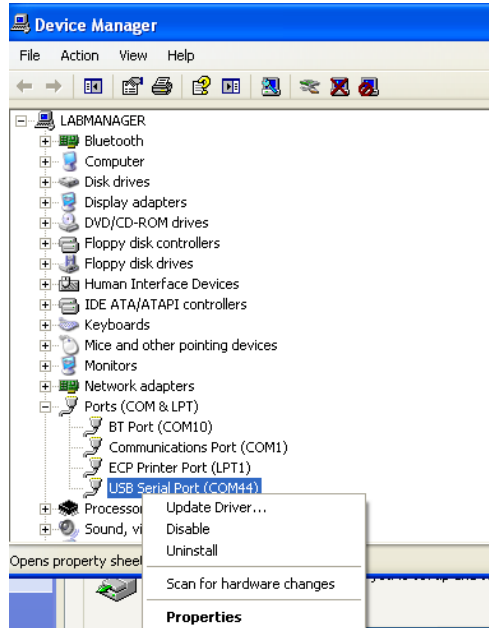
#### XP:



#### Vista and Windows 7:

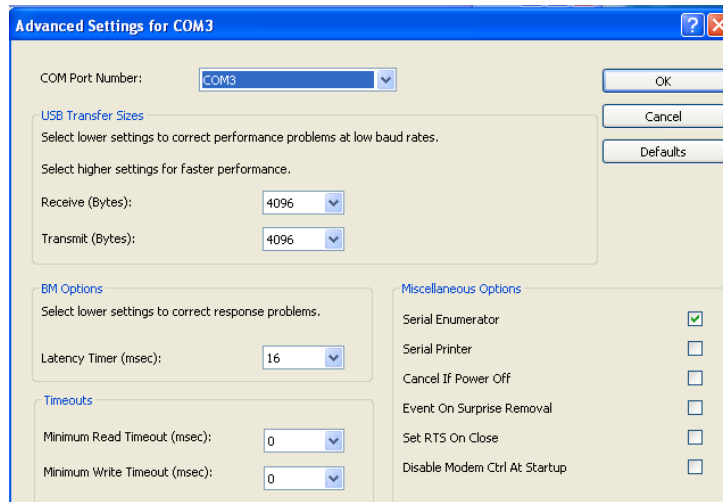


Click on **Device Manager** to open the following window:



If the associated Com port for the installed device is between 1 and 4, proceed to Step 4.

3. Select **Properties** to change the Com port. The software can only work for Com ports 1 thru 4.



4. Launch the Simple Logger software and select the COM port from the Port menu.

