

# 2 Channel DC Voltage & Current Data Logger

Model L452



**Versatile, Powerful  
& Cost Effective  
Data Logger**

## **Programmable data inputs.**

4 to 20mA<sub>dc</sub>  
±100mV, ±1V, ±10V<sub>dc</sub>  
Pulse  
Event

## **User interface.**

Front panel user  
configuration  
Real-time measurement  
display  
Remote user configuration

## **Wireless (Bluetooth) or USB communication.**

## **Comprehensive DataView® software included**

Configure instrument  
Download and store  
measurement  
Analyze data  
Create reports



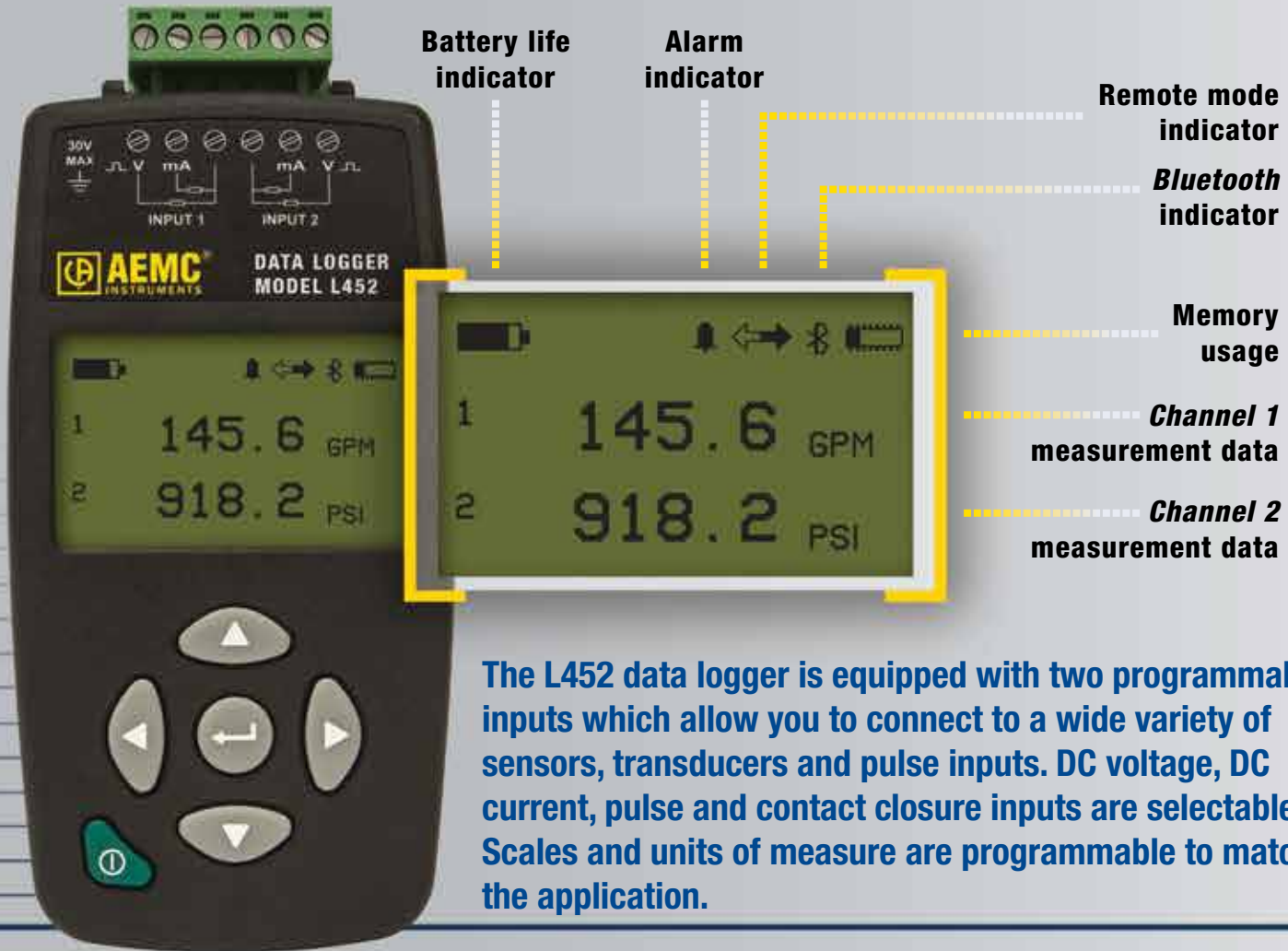
*Our products are backed by over 100 years of experience in test and measurement equipment, and encompass the latest international standards for quality and safety.*

 **Technical Hotline: (800) 343-1391**  
 **www.aemc.com**

 **AEMC®**  
INSTRUMENTS  
CHAUVIN ARNOUX GROUP

# Ergonomic & simple to use,

Ideal for your industrial monitoring & recording applications



The L452 data logger is equipped with two programmable inputs which allow you to connect to a wide variety of sensors, transducers and pulse inputs. DC voltage, DC current, pulse and contact closure inputs are selectable. Scales and units of measure are programmable to match the application.

#### Multiple data input types.

The L452 can log DC voltage, DC current, pulse, or digital (on/off) data, using either one or two programmable inputs. Measurements can be performed directly on the instrument, or through a variety of sensors. This data is stored in the instrument's large 32MB internal Flash memory. Scale values and units of measure are also programmable.

#### Expanded user interface.

You can set up the instrument and view real-time measurement data on the LCD screen.

The L452 features an on-board menu-based interface for navigating measurement data and selecting configuration options.

#### Enhanced DataView® support.

The instrument connects to a PC using either *Bluetooth* or USB. Logged data can be downloaded, analyzed, and formatted into reports using the DataView® software. The DataView® Control Panel enables the ability to change settings on the instrument, view real-time measurements, schedule recording sessions, and perform other configuration tasks.

#### The Model L452 includes two user-selectable modes of operation:

- Local mode provides setup and measurement data display through the instrument's front panel. In Local mode, you can select configuration settings, start and stop a recording session on the instrument, and view measurements in real time.
- Remote mode controls the L452 from your PC. You can connect the instrument directly to a PC and then work with it through the DataView® Control Panel. Remote mode provides functionality not available in Local mode, such as viewing and analyzing the results of a recording session.

# wireless data logger.



ELECTRICAL	MEASUREMENT RANGE	RESOLUTION	ACCURACY (% OF READING)	MAX SAMPLING RATE
DC Current	4 to 20mA	0.01mA	±(0.25% of reading + 0.05mV)	5 samples/s
DC Voltage	±100mV	0.1mV	±(0.5% of reading + 0.1mA)	5 samples/s
	±1V	1mV	±(0.5% of reading + 1mV)	
	±10V	10mV	±(0.5% of reading + 10mV)	
Pulse	±10V	N/A	N/A	100 samples/s
Event	±10V	N/A	N/A	16 samples/s
Pulse Voltage	3.3V (with 1MΩ pull-up)			
Battery Life	Power OFF: 270 days 200ms acquisition, display on: 18 days 200ms acquisition, display off: 36 days 1 min. acquisition, display off: 270 days			
Power Supply	110 to 240V (50/60Hz) – External: via USB connector – Internal: rechargeable NiMH batteries, 2.4V (2 x 1.2V)			
Recording Mode	Start/Stop (stop when memory full or when the session end date is reached)			
Control	Local mode (keypad on front panel) – Remote mode (control via PC)			
Sample Period	200mS to 1 minute selectable			
Storage Period	200mS to 1 hour selectable			
Recording Length	10 minutes to 1 year selectable (capable of recording 2 channels @ 1/minute for > 1 year)			
Data Storage	32 MB (up to 16 million measurements)			
MECHANICAL				
Communication	USB 2.0, Bluetooth 2.1, Class 1 (up to 98 ft (30m))			
Dimensions	1.28 x 2.58 x 4.92" (32.4 x 65.5 x 125mm) (5.41" (137.5mm) with screw connector)			
Weight	7oz (200g)			
Display	LCD 128 x 64 pixels			
Input Terminal Strip	6 screw removable terminals strip			
Operating Temperature	32 to 122°F (0 to 50°C)			
Protection	IP42 (IP20 with terminals)			
Electrical Protection	IEC 61010-1 Ed. 3/IEC 61010-2-030 Ed. 1			

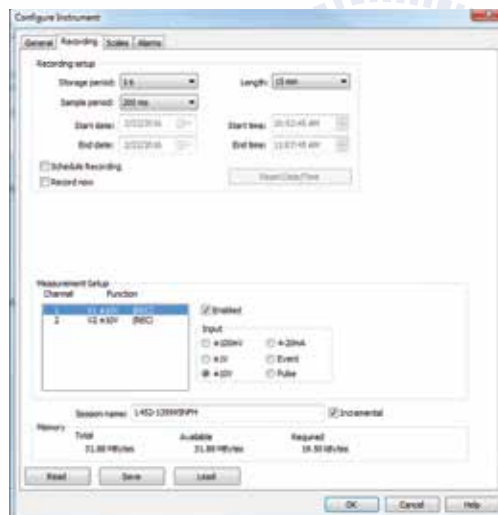
## DataView<sup>®</sup>

Data Analysis and Reporting Software

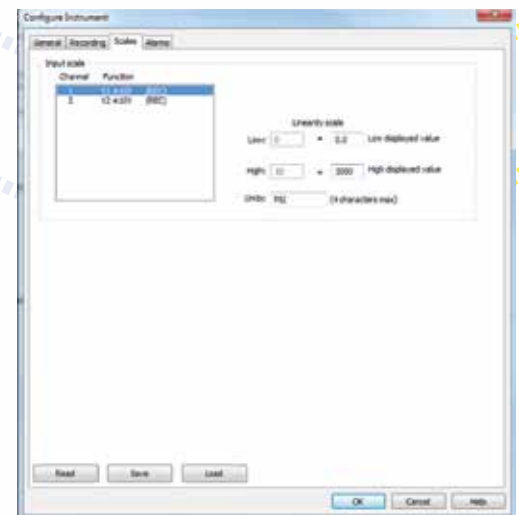


### Easy to download and view data!

- Display and analyze real-time data on your PC
- Configure all data logger functions and parameters from your PC including sample rate, recording length, channel configuration and more
- Create and store a library of configurations that can be uploaded to the logger as needed
- Pan and zoom through sections of the graph to analyze the data
- Display waveforms, trend graphs and text summaries
- Print reports using standard or custom templates you design
- Free software upgrades are available on our website [www.aemc.com](http://www.aemc.com)



Recording Tab provides for sample and storage rate selections as well as recording length and schedule. The input measurement type can also be selected.



Scaling can be programmed to include lower and upper values and units for each channel

#### DESCRIPTION

Data Logger Model L452

#### CATALOG NO.

2153.51



Technical Assistance (800) 343-1391

[www.aemc.com](http://www.aemc.com) 3

## United States & Canada

### Chauvin Arnoux®, Inc. d.b.a. AEMC® Instruments

200 Foxborough Blvd.  
Foxborough, MA 02035 USA  
(508) 698-2115 • Fax (508) 698-2118

### Customer Support

for placing an order,  
obtaining price & delivery  
(800) 343-1391

[customerservice@aemc.com](mailto:customerservice@aemc.com)

### Sales & Marketing Department

for general sales and marketing  
information

[sales@aemc.com](mailto:sales@aemc.com)  
[marketing@aemc.com](mailto:marketing@aemc.com)

### Repair & Calibration Service

for information on repair & calibration  
[repair@aemc.com](mailto:repair@aemc.com)

## United States & Canada (continued)

### Technical & Product Application Support

for technical and application support  
(800) 343-1391  
[techinfo@aemc.com](mailto:techinfo@aemc.com)

### Webmaster

for information regarding our website  
[www.aemc.com](http://www.aemc.com)  
[webmaster@aemc.com](mailto:webmaster@aemc.com)

## South America, Central America, Mexico & the Caribbean

### Chauvin Arnoux®, Inc. d.b.a. AEMC® Instruments

15 Faraday Drive  
Dover, NH 03820 USA  
[export@aemc.com](mailto:export@aemc.com)

## Australia & New Zealand

### Chauvin Arnoux®, Inc. d.b.a. AEMC® Instruments

15 Faraday Drive  
Dover, NH 03820 USA  
[export@aemc.com](mailto:export@aemc.com)

## All other countries

### Chauvin Arnoux® SCA

190, rue Championnet  
75876 Paris Cedex 18, France  
Tel 33 1 44 85 45 28  
Fax 33 1 46 27 73 89  
[info@chauvin-arnoux.com](mailto:info@chauvin-arnoux.com)  
[www.chauvin-arnoux.com](http://www.chauvin-arnoux.com)



Visit our website at [www.aemc.com](http://www.aemc.com)

# AEMC ONE SOURCE®

For All Your Electrical Test & Measurement Instruments

Call the AEMC® Instruments Technical Assistance Hotline for immediate consultation with an applications engineer: **(800) 343-1391**  
Chauvin Arnoux®, Inc. d.b.a. AEMC® Instruments • 200 Foxborough Blvd. • Foxborough, MA 02035 USA • (800) 343-1391 • (508) 698-2115 • Fax (508) 698-2118  
Export Department: (603) 749-6434 (x520) • Fax (603) 742-2346 • E-mail: [export@aemc.com](mailto:export@aemc.com)

