



4 to 20mA_{DC} Current Model L322 & DC Voltage Model L432

Two channel logger has the ability to perform a variety of recording tasks with easy and intuitive setup



► FEATURES

- 2 independent input channels
- -20 to +20mA_{DC} (Model L322)
- User-selectable ranges of ± 100mV; ± 1V and ± 10V_{DC} per channel (Model L432)
- Programmable storage rates from 8 every second to 1 every day
- 4 user selectable storage modes
- Stores up to 240,000 measurements in non-volatile memory
- Powered by standard Alkaline batteries
- Lightweight, compact, fits anywhere
- 5 LED indicators quickly and clearly display logger status
- Includes FREE DataView® software for data storage, real-time display, analysis and report generation
- Optically isolated USB 2.0 communication cable included
- EN 61010-1; 50V CAT III

► APPLICATIONS (MODEL L322)

- Process control monitoring and troubleshooting
- Profile temperature, pressure, flow and other parameters directly
- General purpose DC current monitoring
- And many more

► APPLICATIONS (MODEL L432)

- Circuit design troubleshooting
- Sensor monitoring
- Battery testing
- Power supply profiling
- And many more

► SPECIFICATIONS

MODELS	L322	L432
ELECTRICAL		
Channels	Two	
Input Connection	One 4-position removable screw-type terminal block	
Measurement Range	-20 to +20mA _{DC}	±100mV/1V/10V _{DC} (selectable through DataView® software)
Resolution	0.01mA	0.1mV - 1mV - 10mV
Accuracy (DC and 50/60Hz)		
Range 1	(0.25% of Reading +0.05mA)	±(0.5% of Reading +1mV)
Range 2	–	±(0.5% of Reading +1mV)
Range 3	–	±(0.5% of Reading +10mV)
Input Impedance	50Ω	100mV/1V: 80kΩ 10V: 800kΩ
Sample Rate	8 samples taken at storage interval	
Storage Rate	Programmable from 8 every second to 1 every day	
Storage Modes	Start/Stop, FIFO, Extended Recording Mode (XRM™) and Alarm	
Recording Length	15 minutes to 8 weeks, programmable using DataView®	
Memory	240,000 measurements (512KB) The recorded data is stored in non-volatile memory and will be retained even if the battery is low or removed.	
Communication	USB 2.0 optically isolated	
Power Source	2 x 1.5V AA-cell Alkaline batteries (included)	
Battery Life	100 hours to >45 days (dependent on sample rate and recording length)	
MECHANICAL		
Dimensions	5.45 x 2.75 x 1.28" (136 x 70 x 32mm)	
Weight (with battery)	6.4 oz (181g)	
Case	UL94-V0	
Vibration	IEC 68-2-6 (1.5mm, 10 to 55Hz)	
Shock	IEC 68-2-27 (30G)	
Drop	IEC 68-2-32 (1m)	

CATALOG NO.	DESCRIPTION
2126.06	Simple Logger® II Model L322 (2-Channel, 4 to 20mA _{DC} Current, DataView® software)
2126.07	Simple Logger® II Model L432 (2-Channel, DC ±100mV/1V/10V _{DC} , DataView® software)

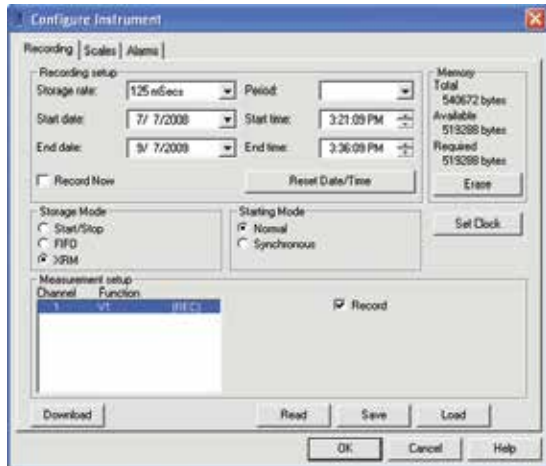


DataView®

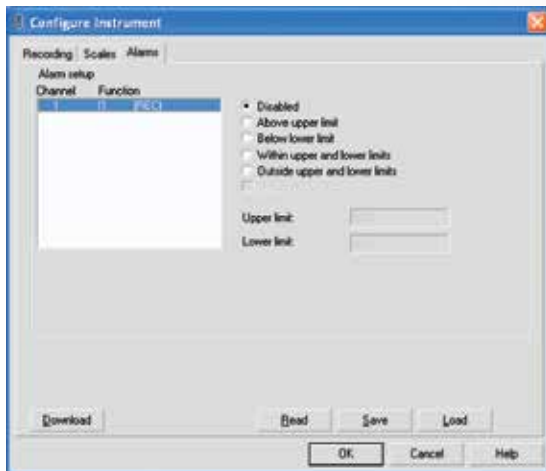
Data Analysis and Reporting Software for Data Loggers



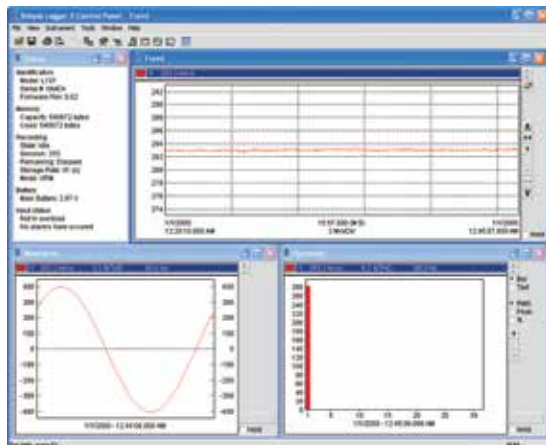
Typical DataView® Functional Displays



Quick and simple configuration of all functions and settings from one dialog box.



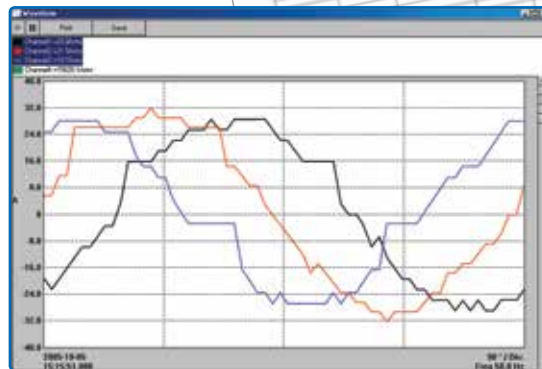
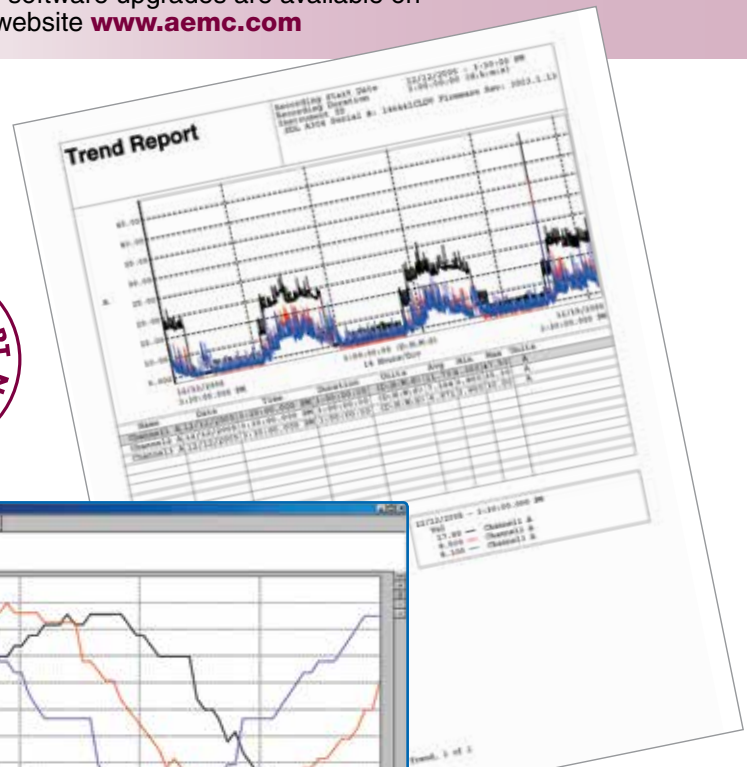
Configure all alarm functions with straightforward selections.



Real-time view of trend, waveform and status screens.

Configure all data logger functions of the Simple Logger® II Models

- Display and analyze real-time data on your PC
- Configure all data logger functions and parameters from your PC including sample rate, recording length, channel configuration and more
- Create and store a complete library of configurations that can be uploaded to the logger as needed
- Zoom in and out and pan through sections of the graph to analyze the data
- Download, display and analyze recorded data
- Display waveforms, trend graphs, harmonics (AC models) and text summaries
- Create custom views and reports
- Print reports using standard or custom templates you design
- Free software upgrades are available on our website www.aemc.com



Real-time display of all active inputs on computer through DataView® software.