

Model L642



2 channel specialty logger for recording temperature from thermocouple inputs

SPECIFICATIONS

MODEL	L642
ELECTRICAL	
Channels	Two
Input Connection	Two miniature, thermocouple connectors
Measurement Range:	°F (°C)
J	-346 to 2192 (-210 to 1200)
K	-328 to 2501 (-200 to 1372)
T	-328 to 752 (-200 to 400)
N	-328 to 2372 (-200 to 1300)
E	-238 to 1742 (-150 to 950)
R	32 to 3212 (0 to 1767)
S	32 to 3212 (0 to 1767)
Resolution	0.1° C/F < 1000° C/F; 1° ≥ 1000° C/F
Accuracy	±(0.1% to 0.2% of Reading + 0.6° to 1°) depending on the range and T/C type
Sample Rate	8 samples taken at storage interval
Storage Rate	Programmable from 5s to 1 per day
Storage Modes	Start/Stop, FIFO, Extended Recording Mode (XRM™) and Alarm
Recording Length	15 minutes to 8 weeks, programmable using DataView®
Memory	240,000 measurements (512KB) The recorded data is stored in non-volatile memory and will be retained even if the battery is low or removed.
Communication	USB 2.0 optically isolated
Power Source	2 x 1.5V AA-cell Alkaline batteries (included)
Battery Life	100 hours to >45 days (dependent on sample rate and recording length)
MECHANICAL	
Dimensions	4.94 x 2.75 x 1.28" (125 x 70 x 32mm)
Weight (with battery)	7 oz (200g)
Case	UL94-V0
Vibration	IEC 68-2-6 (1.5mm, 10 to 55Hz)
Shock	IEC 68-2-27 (30G)
Drop	IEC 68-2-32 (1m)

FEATURES

- 2 input channels
- User-selectable thermocouple types J, K, T, N, E, R, and S (not included)
- Programmable storage rates from 1 every 5 seconds to 1 every day
- 4 user selectable storage modes
- Stores up to 240,000 measurements in non-volatile memory
- Powered by standard Alkaline batteries
- 5 LED indicators quickly and clearly display logger status
- Includes FREE DataView® software for data storage, real-time display, analysis and report generation
- Optically isolated USB 2.0 communication cable included
- EN 61010-1; 50V CAT III

APPLICATIONS

- HVAC monitoring
- Process monitoring
- Refrigeration monitoring
- And many more

PRODUCT INCLUDES

Thermocouple-Flexible

Catalog #2126.47
(1m) K Type, -58° to 480°F



ACCESSORY

Thermocouple-Needle

Catalog #2126.46 (optional)
(7.25 x 0.5") K Type, -58° to 1292°F



CATALOG NO.	DESCRIPTION
2126.08	Simple Logger® II Model L642 (2-Channel, Temperature Thermocouple, DataView® software)
Accessories (Optional)	
2126.46	Thermocouple-Needle (7.25 x 0.5", K Type, -58° to 1292°F)
2126.47	Thermocouple-Flexible (K Type, -58° to 480°F)

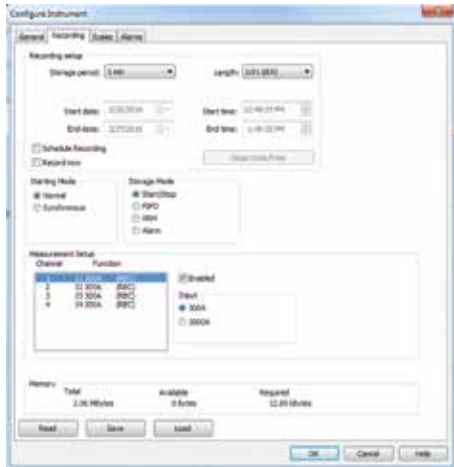




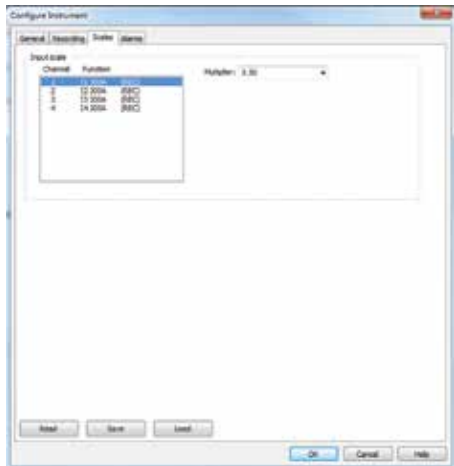
DataView®

Data Analysis and Reporting Software

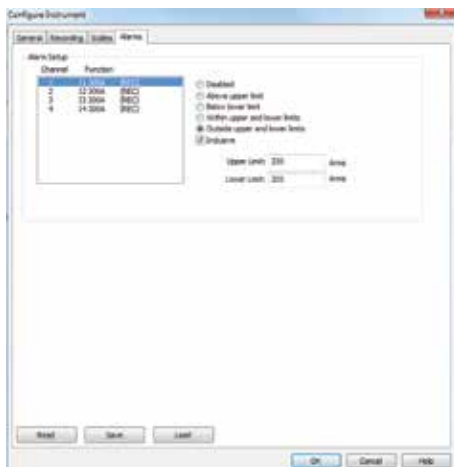
Typical DataView® Functional Displays



Quick and simple configuration of all functions and settings from one dialog box.



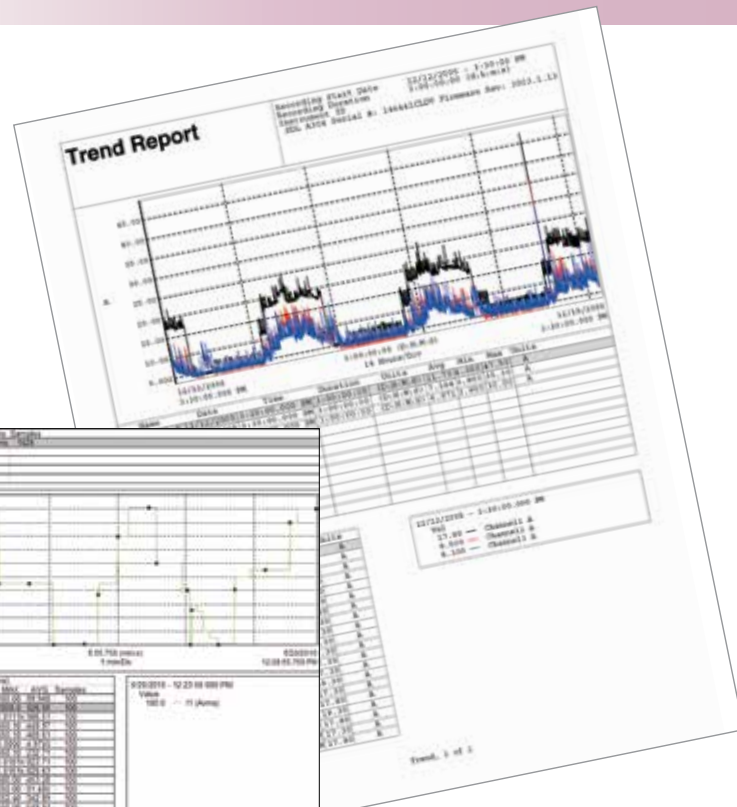
Configure scale functions.



Configure all alarm functions with straightforward selections.

Configure all data logger functions

- Display and analyze real-time data on your PC
- Configure all data logger functions and parameters from your PC including sample rate, recording length, channel configuration and more
- Create and store a complete library of configurations that can be uploaded to the logger as needed
- Zoom in and out and pan through sections of the graph to analyze the data
- Download, display and analyze recorded data
- Display waveforms, trend graphs, harmonics (AC models) and text summaries
- Create custom views and reports
- Print reports using standard or custom templates you design
- Free software upgrades are available on our website www.aemc.com



Real-time display of all active inputs on computer through DataView® software.