

Model L564

Four channel logger with two AC voltage and two AC current inputs that directly measure and record up to 600V



cover closed

► FEATURES

- Four input channels (2 voltage & 2 current)
- User programmable recording modes: Start/Stop, FIFO, Extended Recording Mode (XRM™) and Alarm Recording
- Powered by standard Alkaline batteries for a period of up to 180 days
- Stores 1,000,000 measurements
- Includes FREE DataView® software for data storage, real-time display, analysis and report generation
- Includes set of 3 color-coded (1 red/1 black/1 white) 5 ft leads with color-coded alligator clips
- Wireless *Bluetooth* data communication (Class 2 *Bluetooth* module included)
- Safety Ratings 600V CAT IV; 1000V CAT III

► APPLICATIONS

- Single/split phase and 2 phase load monitoring
- Neutral and ground voltage/current, current monitoring
- Intermittent problem detection
- Harmonic voltage and current monitoring using DataView® software
- Residential power monitoring
- Fault voltage detection
- Load profiling

► SPECIFICATIONS

MODEL	L564	
ELECTRICAL		
Channels	Four (two voltage & two current)	
Connection	Current Channel	Voltage Channel
Input Connection	Two 3 pin connector	Three recessed 4mm banana jacks
Input Range	0 to 1VAc (for use with iron core current probes with a voltage output)	0 to 600VAc
Accuracy (50/60Hz)	0 to 10mV unspecified 10 to 50mV: ±(0.5% of Reading + 1mV) 50 to 1000mV: ±(0.5% of Reading + 0.5mV)	0 to 5V unspecified 5 to 50V: ±(0.5% of Reading + 1V) 50 to 600V: ±(0.5% of Reading + 0.5V)
Input Impedance	100kΩ	16MΩ
Sample Rate	64 samples/cycle	
Storage Rate	Programmable from 125ms to 1 per day	
Storage Modes	Start/Stop, FIFO, Extended Recording Mode (XRM™) and Store on Alarm	
Recording Length	15 minutes to 8 weeks, programmable using DataView®	
Memory	1,000,000 measurements (2MB). The recorded data is stored in non-volatile memory and will be retained even if the battery is low or removed.	
Communication	<i>Bluetooth</i> connection (communicates up to 30 ft)	
Power Source	4 x 1.5V C-cell Alkaline batteries (included)	
Battery Life	Up to 180 days (dependent on storage rate/recording length)	
MECHANICAL		
Dimensions	5.904 x 5.904 x 3.568" (150 x 150 x 91mm)	
Weight (with battery)	2.1 lbs (0.95kg)	
Case	UL94-V0	
Vibration	IEC 68-2-6 (1.5mm, 10 to 55Hz)	
Shock	IEC 68-2-27 (30G)	
Drop	IEC 68-2-32 (1m)	

► PRODUCT INCLUDES



Bluetooth USB adapter, set of 3 color-coded (1 red/1 black/1 white) 5 ft leads with color-coded alligator clips, twelve color-coded input ID markers, mounting hardware, 4 x 1.5V C-Cell Alkaline batteries, USB cable for firmware updates, and USB stick supplied with DataView® software and user manual.

CATALOG NO.	DESCRIPTION
-------------	-------------

2126.36	Simple Logger® II Model L564 (4-Channel, TRMS, <i>Bluetooth</i> , Voltage & Current, DataView® software)
---------	--



DataView®

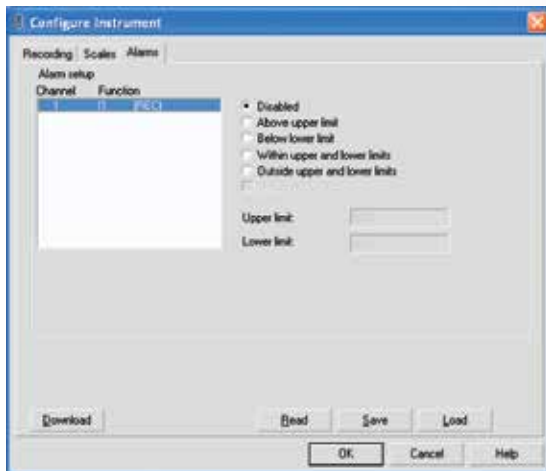
Data Analysis and Reporting Software for Data Loggers



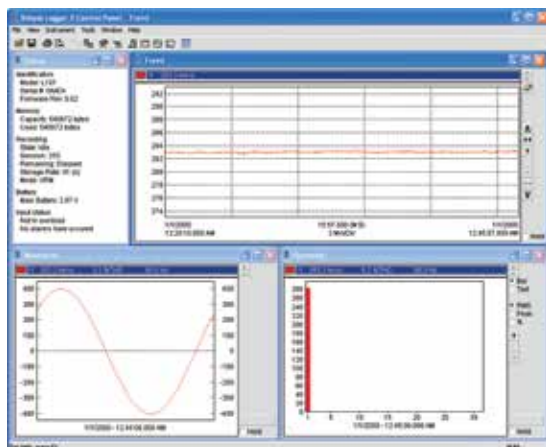
Typical DataView® Functional Displays



Quick and simple configuration of all functions and settings from one dialog box.



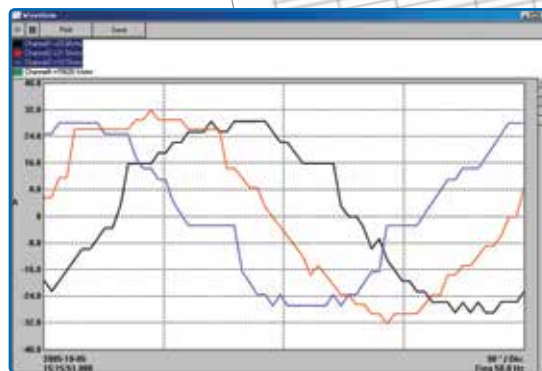
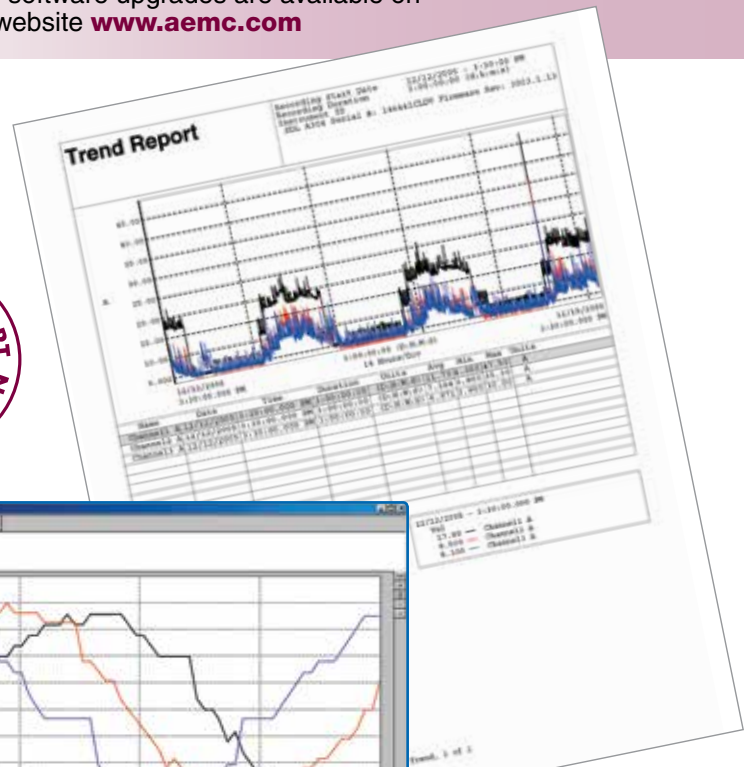
Configure all alarm functions with straightforward selections.



Real-time view of trend, waveform and status screens.

Configure all data logger functions of the Simple Logger® II Models

- Display and analyze real-time data on your PC
- Configure all data logger functions and parameters from your PC including sample rate, recording length, channel configuration and more
- Create and store a complete library of configurations that can be uploaded to the logger as needed
- Zoom in and out and pan through sections of the graph to analyze the data
- Download, display and analyze recorded data
- Display waveforms, trend graphs, harmonics (AC models) and text summaries
- Create custom views and reports
- Print reports using standard or custom templates you design
- Free software upgrades are available on our website www.aemc.com



Real-time display of all active inputs on computer through DataView® software.