

DATA LOGGERS

8 TO 16 CHANNEL LOGGER

MODELS DL-1080 & DL-1081

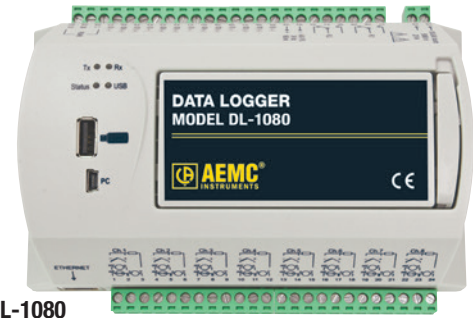
Versatile, powerful and cost effective data loggers handling analog, digital and other types of variables with high resolution and speed

SPECIFICATIONS

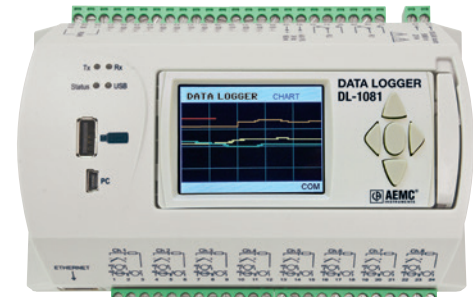
MODELS	DL-1080 & DL-1081		
ELECTRICAL			
Input Type	Measuring Range:	Accuracy:	
J	-184° to 1832°F (-120° to 1000°C)	±0.2% (F.R.) ±1°C	
K	-202° to 2501.6°F (-130° to 1372°C)		
T	-202° to 752°F (-130° to 400°C)		
E	-202° to 1436°F (-130° to 780°C)		
N	-202° to 2372°F (-130° to 1300°C)		
R	68° to 3214.4°F (20° to 1768°C)	±0.2% (F.R.) ±3°C	
S	68° to 3214.4°F (20° to 1768°C)		
B	212° to 3308°F (100° to 1820°C)	±0.15% (F.R.)	
Pt100	-328° to 1562°F (-200° to 850°C)		
Pt1000	-328° to 1562°F (-200° to 850°C)	±0.15% (F.R.)*	
Linear 0 to 20mA	User Programmable		
Linear 4 to 20mA			
Linear 0 to 20mV			
Linear 0 to 50mV			
Linear 0 to 60mV			
Linear -20 to 20mV			
Linear 0 to 5V			
Linear 0 to 10V			
Digital Inputs			Logic level "0": from 0 to 0.8Vdc Logic level "1": from 3 to 30Vdc
Internal Memory		2MB	
Excitation Current	Pt100s: 360µA; Pt1000s: 320µA		
Maximum Pt100/Pt1000 Compensated Cable Resistance	40Ω		
Maximum Input Voltage	30Vdc		
Input Current @ 30Vdc (typical)	3mA		
Digital Outputs	Maximum output voltage: 30Vdc Maximum output current: 200mA Maximum relay current: 3A @ 250Vac; 3A @ 30Vdc		
Storage Rate	from 1ms to 24 hours		
Maximum Channel Logged	100		
Supported Modbus Commands	Read Coil Status (01h) Read Holding Registers (03h) Write Single Coil (05h) Write Single Register (06h) Write Multiple Registers (0Fh)		
Power Supply	100 to 240Vac, 50/60Hz, 20VA (max)		
ENVIRONMENTAL			
Operating Temperature	32° to 122°F (0° to 50°C)		
Relative Humidity	80% up to 85°F (30°C) For temperatures higher than 85°F (30°C), decrease 3% per °C		
Ingress Protection	IP20		

F.R. = Full Range

*The full scale refers to the input of the sensor signal and not the range of configured indication.



DL-1080



DL-1081

INPUTS RATED CAT II



FEATURES

- 8 universal analog input channels
- 8 digital I/Os (individually configured as inputs or outputs)
- 2 relay outputs (NO, NC and common)
- RS485 interface (Modbus master or slave)
- 24Vdc output to power up to eight 4 to 20mA transmitters
- Ethernet interface for LAN and internet use
- USB-device interface for configuring, monitoring and download
- USB-host interface for logged data retrieval through a USB flash drive
- Up to 32 configurable alarms
- Up to 128 virtual channels
- Detachable display (optional)
- Up to 100 channels can be logged at a configurable rate
- Includes FREE software for data retrieval, real-time display, analysis and report generation
- 4 input channel types: analog, digital, remote and virtual
- Up to 16GB SD card interface

DATA LOGGERS

8 TO 16 CHANNEL LOGGER

MODEL DL-1081

Color Functional Displays

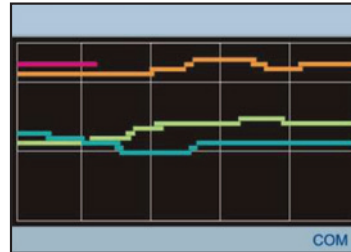
"FAVORITES" SCREEN

Room Temp 84.22°F	Valve Pressure 428 PSI
In Flow Rate 45.3 GPM	Vat Temp 812°F
Line Pressure 253 PSI	Out Flow Rate 45.3 GMP

COM

Shows a six-position grid where you can assign a channel to be displayed real-time in each position

"CHART" SCREEN



Displays a plot of the favorite channels values

"CONFIGURATION" SCREEN

FieldLogger	
Date	16/11/2010
Time	12:01:18
Ethernet	
DHCP Enable	Yes
IP Address	000.000.000.000
Subnet Mask	000.000.000.000

Data logger and display parameters can be changed and viewed on this screen

"ALARMS" SCREEN

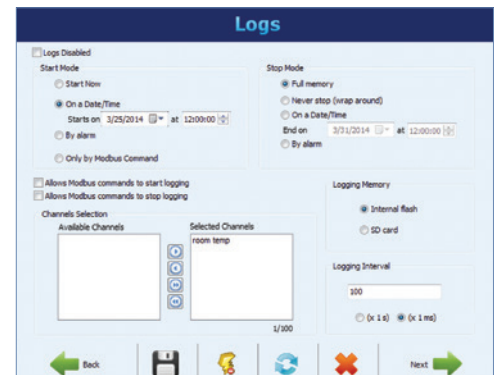
1	2	3	4	5	6	7	8
9	10	11	12	13	14	15	16
17	18	19	20	21	22	23	24
25	26	27	28	29	30	31	32

ALM COM

A 32-position grid where each numbered position is related to its equivalent alarm or event. When an alarm is active, its number will be displayed in red on this screen



SOFTWARE SCREENS



PRODUCTS INCLUDE

DL-1080, DL-1081:
Mini USB cable, printed quick start guide and a USB drive with software, drivers and a user manual.



CATALOG NO.	DESCRIPTION
2134.61	Data Logger Model DL-1080 (8 Analog to 8 Digital Channel, no Display)
2134.62	Data Logger Model DL-1081 (8 Analog to 8 Digital Channel, Display)

