

DATA LOGGERS

SIMPLE LOGGER® DATA LOGGERS



MODELS SL10 TO SL13

Small DC voltage Simple Logger® can be ready to go in minutes with just a few parameters to set up

MODEL SL20

Log DC Current



SCAN TO
LEARN
MORE

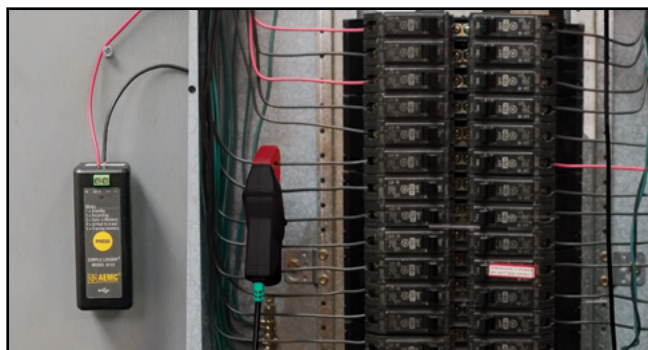
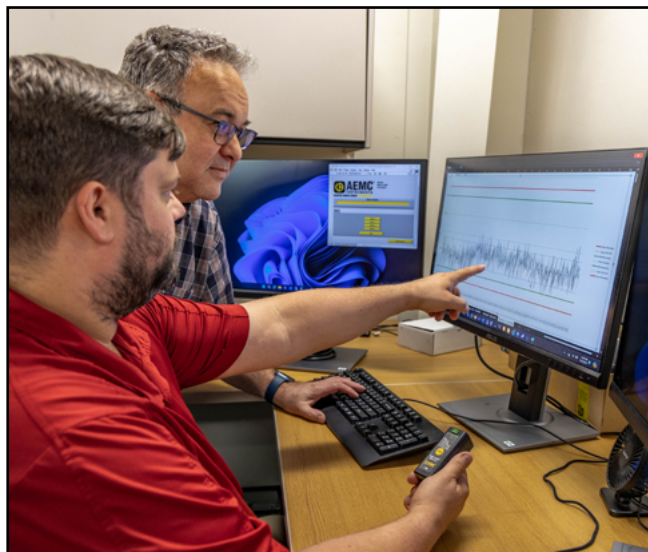
FEATURES

- Simple one button operation
- Quick two wire input connection
- User configurable scaling, units of measure and recording length
- Stores up to 4 million measurements
- Data analysis software included
- Software provides real-time trend graph display, data download, analysis and report generation
- Micro-B USB cable included



| MODELS | SL10 | SL11 | SL12 | SL13 | SL20 |
|-----------------------|---|------------------------------|-------------------------------|--------------------------------|--------------------------------|
| | VOLTAGE | | | | CURRENT |
| Range | ± 100 mVdc | ± 1 Vdc | ± 10 Vdc | ± 50 Vdc | ± 20 mA |
| Resolution | 0.1 mV | 1 mV | 10 mV | 50 mV | 0.02 mA |
| Accuracy | ± (0.5 % of Reading + 0.5 mV)* | ± (0.5 % of Reading + 5 mV)* | ± (0.5 % of Reading + 50 mV)* | ± (0.5 % of Reading + 250 mV)* | ± (0.5 % of Reading + 0.1 mA)* |
| Maximum Input Voltage | 60 Vdc | | | | 25 mAac |
| Input Impedance | 800 kΩ | | | | 49 Ω |
| Power Supply | Internal: (2) 1.5 V AA non-rechargeable batteries External: USB 2.0 (computer or other USB power source) | | | | |
| Power Consumption | Internal power: 1 mA (average) / External power: 100 mW | | | | |

*Accuracy is specified with the 10-point filter selected to reduce noise.
Consult factory for NIST Calibration prices.



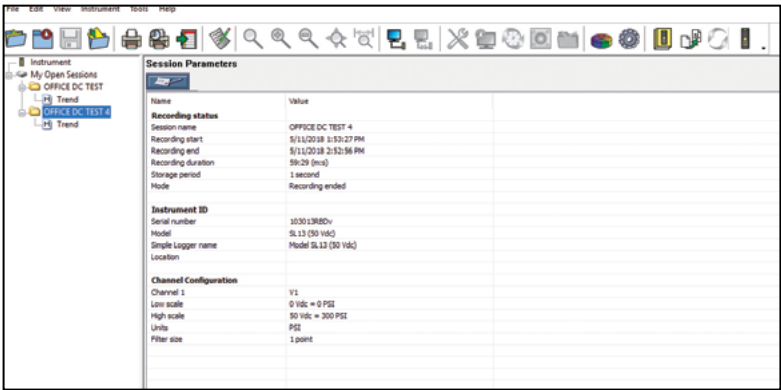
DATA LOGGERS

SIMPLE LOGGER® DATA LOGGERS

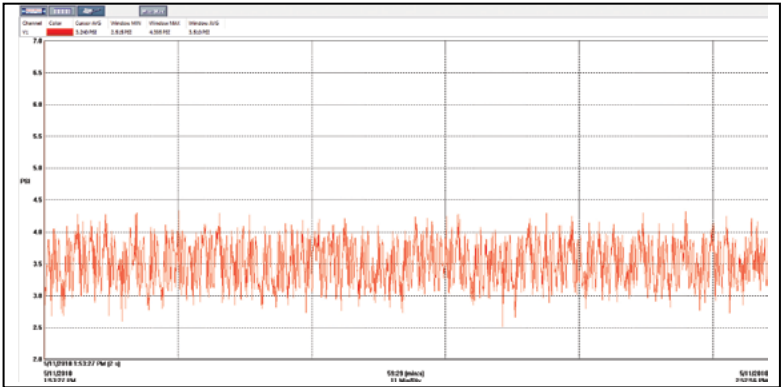
SIMPLE LOGGER® CONTROL PANEL

The Simple Logger® Control Panel allows you to configure how data measured by these instruments is recorded and displayed. The available settings depend on which model is connected to the computer. The following table shows which configuration options are available for each model.

| FEATURE | SL10 | SL11 | SL12 | SL13 | SL20 |
|-------------------------|------|------|------|------|------|
| Set up recording | ✓ | ✓ | ✓ | ✓ | ✓ |
| Define units | ✓ | ✓ | ✓ | ✓ | ✓ |
| Set instrument clock | ✓ | ✓ | ✓ | ✓ | ✓ |
| Erase instrument memory | ✓ | ✓ | ✓ | ✓ | ✓ |
| Scaling | ✓ | ✓ | ✓ | ✓ | ✓ |
| Filtering | ✓ | ✓ | ✓ | ✓ | ✓ |



Current configuration of a logger



Typical real-time trend graph

| CAT. # | DESCRIPTION |
|---------|--|
| 2156.10 | Simple Logger® Model SL10 (Voltage, 100 mVdc) |
| 2156.11 | Simple Logger® Model SL11 (Voltage, 1 Vdc) |
| 2156.12 | Simple Logger® Model SL12 (Voltage, 10 Vdc) |
| 2156.13 | Simple Logger® Model SL13 (Voltage, 50 Vdc) |
| 2156.20 | Simple Logger® Model SL20 (Current, 4 to 20 mA _{DC}) |