

# DATA LOGGERS

## SIMPLE LOGGER® DATA LOGGERS

### MODELS SL20 TO SL50

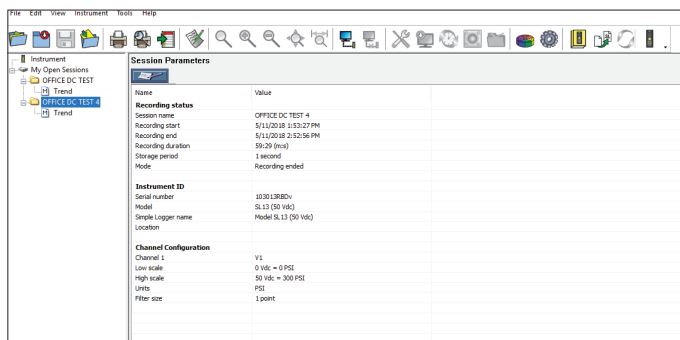
Models available for logging  
DC Current, Temperature,  
Pulse and Events



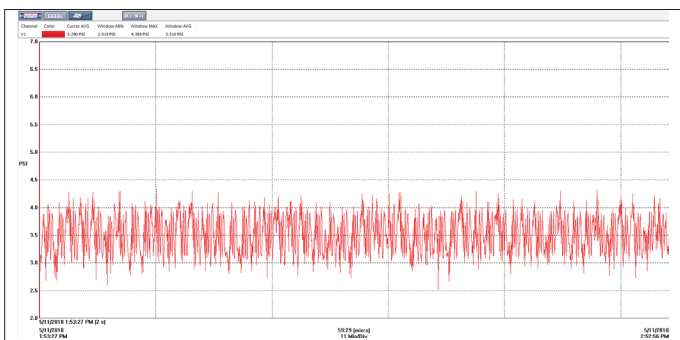
### SPECIFICATIONS

MODELS	SL20	SL30	SL31	SL40	SL50							
					Thermocouple Type:							
					J	K	N	T	E	R	S	
	<b>CURRENT</b>	<b>PULSE</b>	<b>EVENT</b>		<b>TEMPERATURE</b>							
<b>Range</b>	±20 mA	Contact closure, 0 to 5 VDC	Contact closure, 0 to 5 VDC	-94 to 1022°F (-70C to +550C)	-346 to 2192°F (-210 to 1200°C)	-328 to 2502°F (-200 to 1372°C)	-328 to 2372°F (-200 to 1300°C)	-328 to 752°F (-200 to 400°C)	-328 to 1832°F (-200 to 1000°C)	32 to 3200°F (0 to 1760°C)		
<b>Resolution</b>	0.02 mA	n/a		0.1°C	0.1°C							
<b>Accuracy</b>	±(0.5% of Reading + 0.1mA)*	n/a		±(1% of Reading + 1.8°F [1°C])*	Below -148°F (-100°C): ±(0.4% of Reading + 9°F [5°C])*				32 to 212°F (0° to +100°C): ±(0.3% of Reading + 18°F [10°C])*			
					-148 to 212°F (-100° to 100°C): ±(0.3% of Reading + 7.2°F [4°C])*							
					Above 212°F (100°C): ±(0.2% of Reading + 5.4°F [3°C])*				Above 212°F (100°C): ±(0.2% of Reading + 14°F [8°C])*			
<b>Maximum Input</b>	25 mADC	10 Vdc	n/a		1 V							
<b>Input Impedance</b>	49 Ω	800 KΩ	n/a		800 KΩ							
<b>Power Source</b>	Internal: Two 1.5 V AA non-rechargeable batteries External: USB 2.0 (computer or other power source, when powered by the USB the battery is automatically disconnected)											
<b>Power Consumption</b>	Internal power: 1 mA (average) External power: 100 mW											

\*Accuracy is specified with the 10-point filter selected to reduce noise.



Shows the current configuration of the logger.



Typical real-time trend graph.

CATALOG NO.	DESCRIPTION	CATALOG NO.	DESCRIPTION
2156.20	Simple Logger Model SL20 (Current, 4 to 20 mADC)	2156.40	Simple Logger Model SL40 (Temperature, RTD/PT1000)
2156.30	Simple Logger Model SL30 (Pulse)	2156.50	Simple Logger Model SL50 (Temperature, Thermocouple)
2156.31	Simple Logger Model SL31 (Event)		

