

Model MTX 162

Compact, lightweight and stackable,
these instruments can be connected
directly to a PC via USB or Ethernet

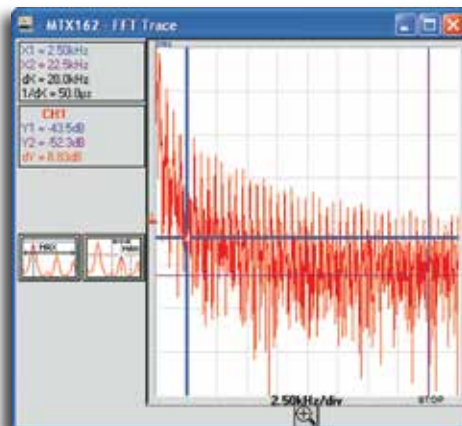


SPECIFICATIONS

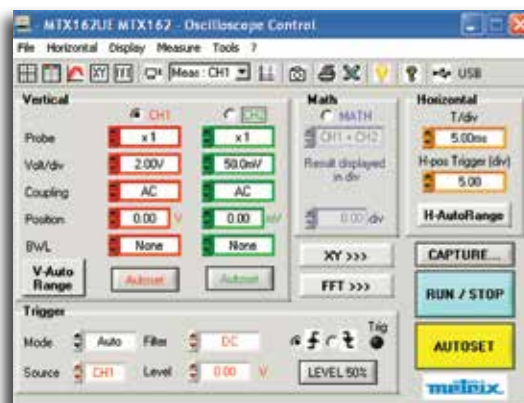
| MODEL | MTX 162 |
|---|--|
| INTERFACE | |
| Screen Specifications | Color PC screen (min. resolution: 1024 x 768) |
| Display Mode | 8 x 10 div.- Multi-windowing (control panel, trace, zoom, FFT, etc.) |
| Traces on Screen | 4 traces + 4 references |
| Screen Control | Windows-like & online help; All commands available via mouse |
| VERTICAL | |
| Vertical Sensitivity | 5mV to 100V/div |
| Bandwidth | 60MHz (bandwidth limiter: 15MHz, 1.5MHz or 5kHz) |
| Channels | 2 channels, class 1, common ground |
| HORIZONTAL | |
| Time Base Speed | 32 ranges from 5ns to 100s/div |
| TRIGGER | |
| Mode | Auto, Triggered, One-shot ROLL, Auto-level at 50% |
| Source | CH1, CH2, Line |
| Type | Rising or falling edge, adjustable pretriggering from 0 to 100% |
| DIGITAL MEMORY | |
| Max. Sampling Speed | Repetitive = 20GS/s; One-shot = 50MS/s |
| Vertical Resolution | 8 bits |
| Memory Capacity | Depth = 50,000 points – storage capacity depends on PC configuration used |
| COMMUNICATION | |
| Software | PC operating software and LabWindows/LabView drivers (included) |
| SPO (SMART PERSISTENCE OSCILLOSCOPE) | |
| Duration of Persistence | Analog remanent mode |
| MEASUREMENT PROCESSING | |
| FFT Analyzer/ MATH Functions | FFT, +, -, x, / |
| Manual Cursors | dv, dt, 1/dt, phase – cursors linked or unlinked to trace |
| Automatic Measurements | 2 or 19 measurements out of 19 + automatic phase on/any type of curve markers and limits |
| RECORDER MODE | |
| Duration/Sampling | Dedicated ROLL mode from 2s to 33min |



Connect and view
results directly
from your
PC computer



Real-time trace



Typical PC setup screen

CATALOG NO. DESCRIPTION

| | |
|---------|--|
| 2150.14 | PC Scope Module Model MTX 162UE (2-Channel, 60MHz) |
| 2150.15 | PC Scope Module Model MTX 162UEW (2-Channel, Wi-Fi, 60MHz) |