

Upgrading Firmware on PEL Instruments Models 52, 102, 103, 105, 112, 113 & 115



PEL 102



PEL 103



PEL 112



PEL 113



PEL 52



PEL 105



PEL 115

POWER & ENERGY LOGGERS

Copyright© Chauvin Arnoux®, Inc. d.b.a. AEMC® Instruments. All rights reserved.

No part of this documentation may be reproduced in any form or by any means (including electronic storage and retrieval or translation into any other language) without prior agreement and written consent from Chauvin Arnoux®, Inc., as governed by United States and International copyright laws.

Chauvin Arnoux®, Inc. d.b.a AEMC® Instruments
15 Faraday Drive • Dover, NH 03820 USA
Phone: (603) 749-6434 or (800) 343-1391

This documentation is provided **as is**, without warranty of any kind, express, implied, or otherwise. Chauvin Arnoux®, Inc. has made every reasonable effort to ensure that this documentation is accurate; but does not warrant the accuracy or completeness of the text, graphics, or other information contained in this documentation. Chauvin Arnoux®, Inc. shall not be liable for any damages, special, indirect, incidental, or inconsequential; including (but not limited to) physical, emotional or monetary damages due to lost revenues or lost profits that may result from the use of this documentation, whether or not the user of the documentation has been advised of the possibility of such damages.

TABLE OF CONTENTS

INTRODUCTION3

PEL FIRMWARE UPGRADE PROCESS3

CONTACTING AEMC® INSTRUMENTS6

INTRODUCTION

The firmware for the PEL series Power and Energy Loggers (Models PEL 52, 102, 103, 105, 112, 113 and 115) controls the features and functionality of each instrument model. AEMC® Instruments provides firmware updates free of charge to download through our DataView® PEL Control Panel software.

The procedure for updating PEL firmware has been significantly upgraded, to provide a more streamlined user experience. The process of opening the AEMC® Instruments Download web page, navigating to the PEL firmware downloads, checking the firmware revision number and comparing it to the version running on your instrument, and other tasks has been fully automated.

PEL FIRMWARE UPGRADE PROCESS



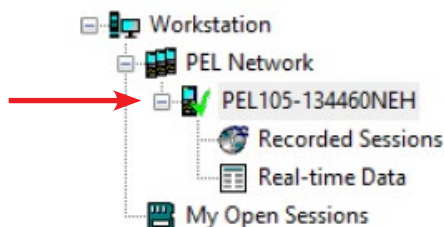
WARNING: Updating the PEL firmware could reset the configuration of your PEL and cause loss of stored data. Before you begin, we suggest you save the data to a computer before updating firmware. Also, ensure that an active recording is not running on the instrument.

To update the firmware, your computer must be running DataView with the latest version of the PEL Control Panel. In addition, the Control Panel option **Check automatically for new firmware for connected instruments upon start of program** (found inside the **Tools > Options** menu) must be selected, as it is by default. Then proceed as follows:

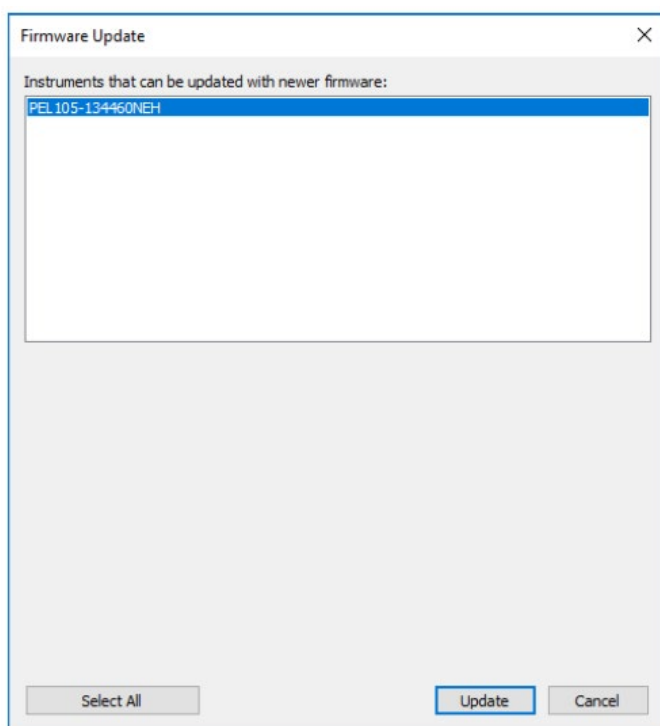
1. Power **ON** the instrument using external power, to ensure the instrument remains **ON** throughout the update procedure.
Also ensure that the battery is at least 50 % (and ideally fully) charged. **Do not** perform an update with the instrument running on battery power, or with low battery charge. If the instrument turns OFF while firmware updating is in progress, it could become inoperative and require you to send it back to AEMC® Instruments for repair. External power with a sufficiently charged battery for backup helps minimize the risk of power interruptions during updating.
2. Connect the PEL instrument to the computer:
 - PEL 52: Connect via Wi-Fi (direct or access point)
 - PEL 102, 103, 105, 112, 113, 115: Connect via the provided USB cable
3. Launch the DataView PEL Control Panel.
4. Ensure the instrument is listed in the PEL Network navigation tree. If it is, skip this step and go to step 5 below.

If not, click **Instrument** in the menu bar and select **Add an Instrument**, then connect the instrument using the **Add an Instrument Wizard**. (Press F1 if you need assistance).

5. Ensure the instrument is listed with a **green check mark** next to its name, indicating it is connected. If not, select the **instrument** and click **Instrument > Reconnect Instrument**.

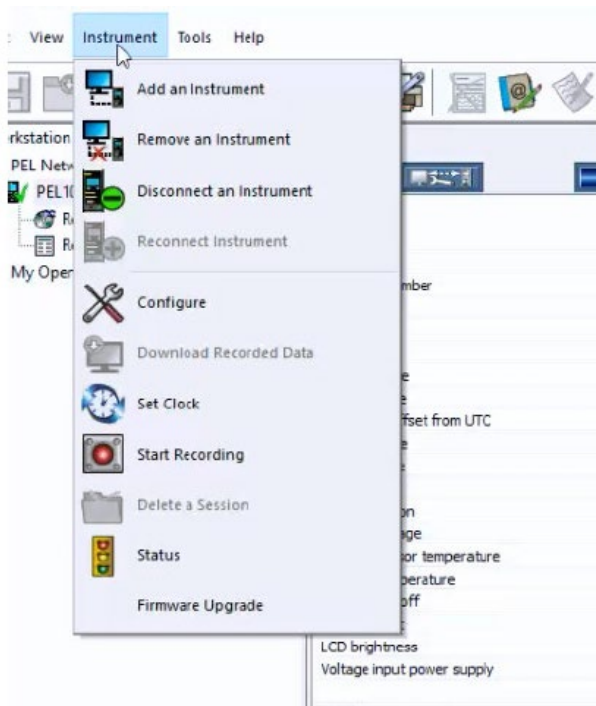


6. By default, the PEL Control Panel automatically checks the connected instrument's firmware. If it is out of date, the **Firmware Update dialog box** appears, listing the instrument and any other instrument running out-of-date firmware.



Click **Update** (or click **Select All** to update multiple instruments). This displays the **Firmware Upgrade dialog box** listing the latest firmware revisions for the PEL DSP and microprocessor; proceed as instructed in Step 7 below.

If the PEL Control Panel option **Check automatically for new firmware for connected instruments upon start of program** has been previously de-selected, the automatic firmware check does not occur. In this case, click **Instrument** in the menu bar. This includes the option Firmware Upgrade.



If the selected instrument is running the latest firmware, this option is grayed out and inactive. If the instrument is not running the latest firmware, click **Firmware Upgrade** to display the **Firmware Upgrade dialog box**.

7. Click the **Start** button to begin the update. During this process, status bars display the progress of the DSP and microprocessor firmware updates.



NOTE: The progress status bar only appears if firmware requires updating. If either the DSP or microprocessor firmware does not require updating, their status bar will not appear.

8. When the firmware update is complete, click the **Close** button to exit.

CONTACTING AEMC® INSTRUMENTS

For Instrument Repair and Calibration:

Chauvin Arnoux®, Inc. d.b.a. AEMC® Instruments
15 Faraday Drive ▪ Dover, NH 03820 USA
Phone: (800) 945-2362 (Ext. 360) / (603) 749-6434 (Ext. 360)
E-mail: repair@aemc.com

Or contact your authorized distributor

For Technical Assistance:

Chauvin Arnoux®, Inc. d.b.a. AEMC® Instruments
Phone: (800) 343-1391 (Ext. 351)
E-mail: techsupport@aemc.com
www.aemc.com

NOTES:



07/25
99-MAN 100652 v00

AEMC[®] Instruments
15 Faraday Drive • Dover, NH 03820 USA
Phone: +1 (603) 749-6434 • +1 (800) 343-1391
www.aemc.com
